

exocad

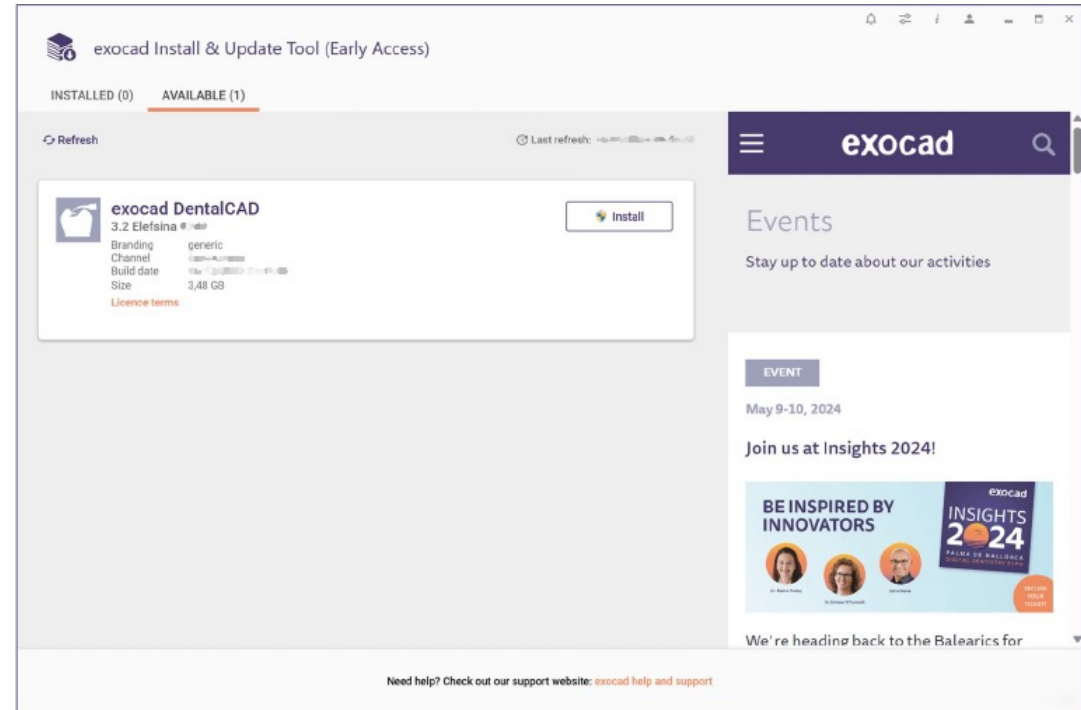
INSTALL & UPDATE TOOL QUICK-START GUIDE

Imagine the **CAD**ABILITIES



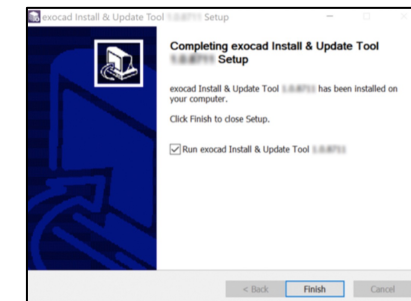
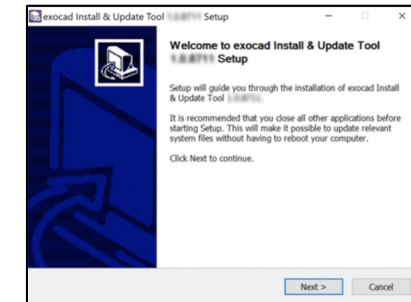
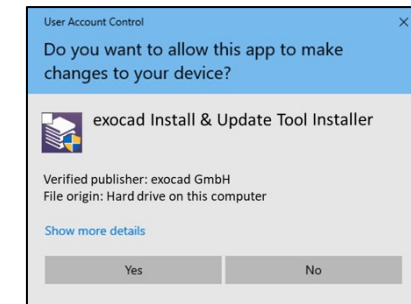
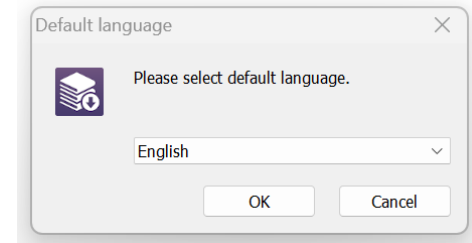
What is the exocad Install & Update tool?

- The Install & Update Tool helps you install and manage *DentalCAD*.
- It notifies you about any *DentalCAD* updates so you can easily apply them with a single click.
- The tool also keeps you informed about current exocad news and events.



Installing the tool

1. Download the desired installer file (early access, stable version installer or FDA installer) from the Secure Area and double-click it. Select a language and click **OK**.
2. If prompted, click **Yes** to allow the installer to make changes to your PC.
3. Click **Next** to start installation.
4. Click **Finish** to finalize the installation and launch the tool.



Log in to *my.exocad*

- You must be logged in to *my.exocad* to use the Install and Update Tool. Log in to the tool using your existing *my.exocad* credentials.
- If you do not yet have a *my.exocad* account, sign up by clicking **Register now**.

If you are already logged in to *my.exocad*, this step is skipped.

Log in to use exocad Install & Update Tool [Version 1.0 (engine build: 8731) [<64-Bit>]

exocad

Log in

Email
Email

Password
Password

[Forgot your password?](#)

Log in

or continue with

iTero **invisalign**

[Imprint](#) [Data Privacy](#) [Contact](#)

Welcome to *my.exocad*!

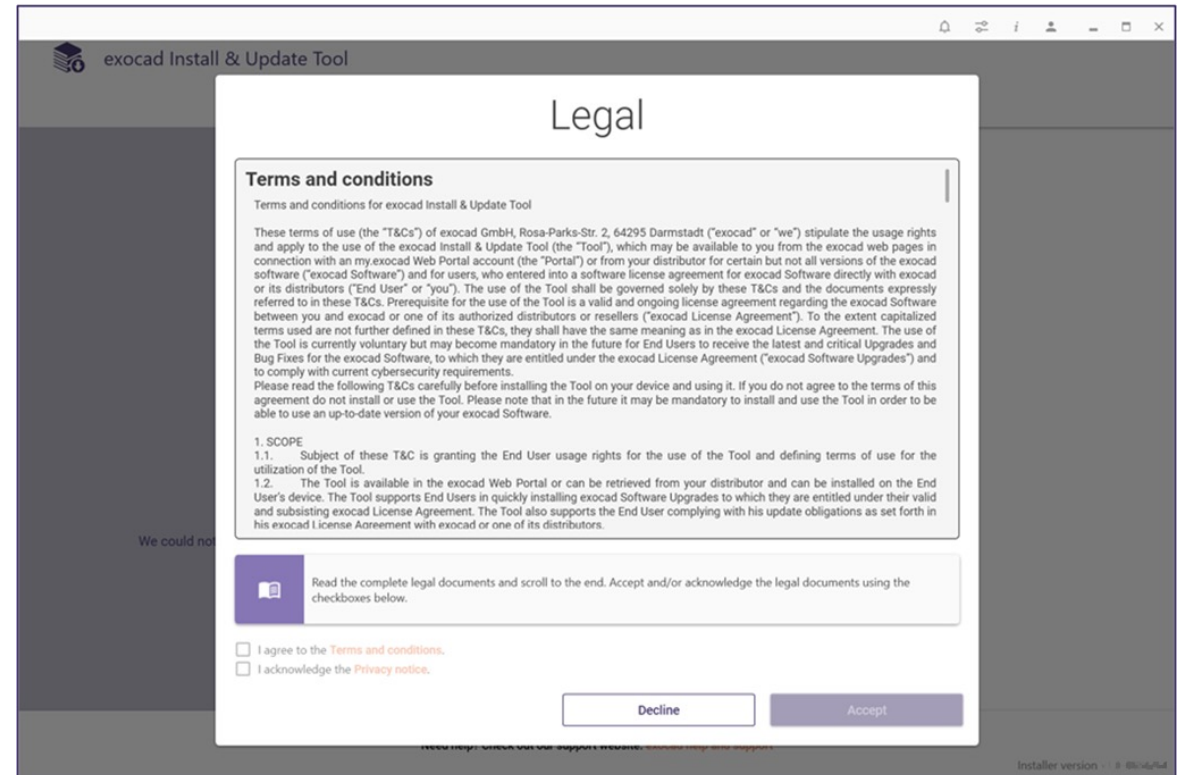
To use software products from exocad, an account in *my.exocad* is required. Log in to your existing account or create a new account to register your exocad software license.

Your *my.exocad* portal will become a comprehensive solution for managing your accounts and licenses. We are constantly working to improve the user experience and will provide more features and services going forward.

Register now

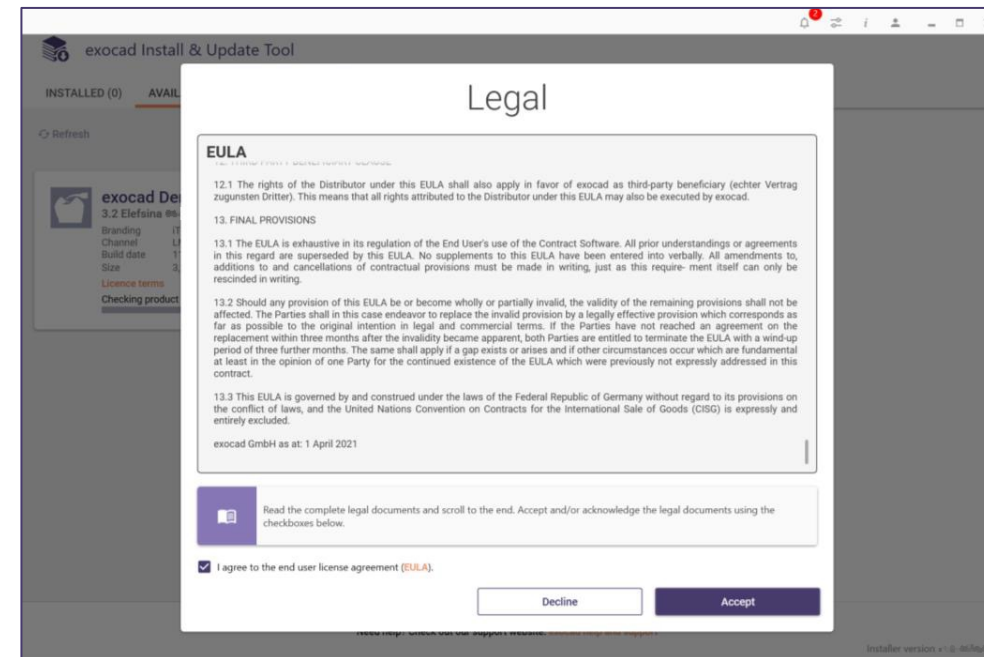
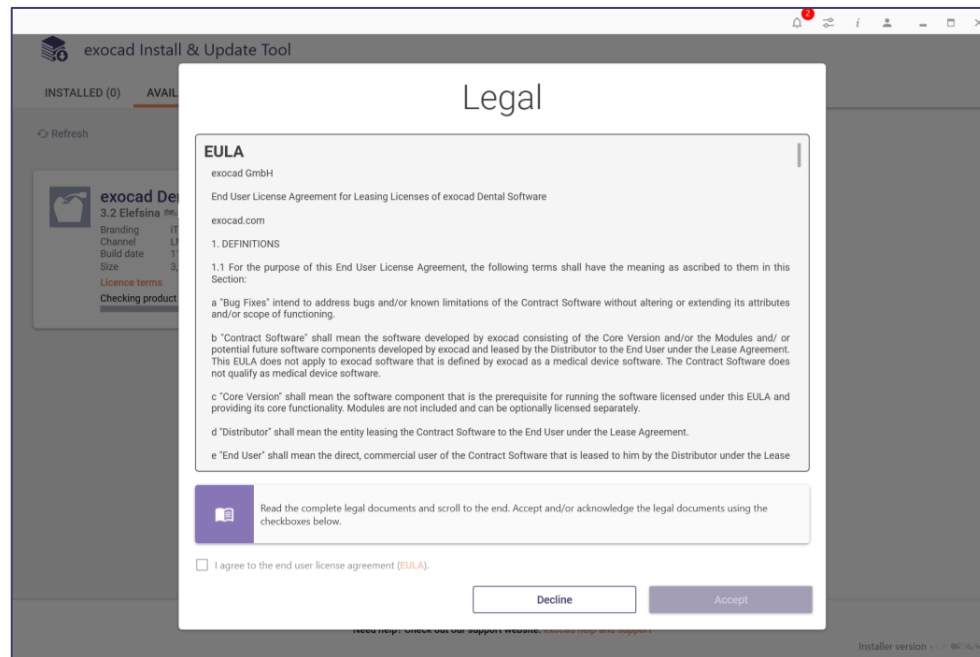
Before you start

1. Read the **Terms and Conditions** and **Privacy Notice**.
2. Scroll down and check both boxes.
3. Click **Accept**.



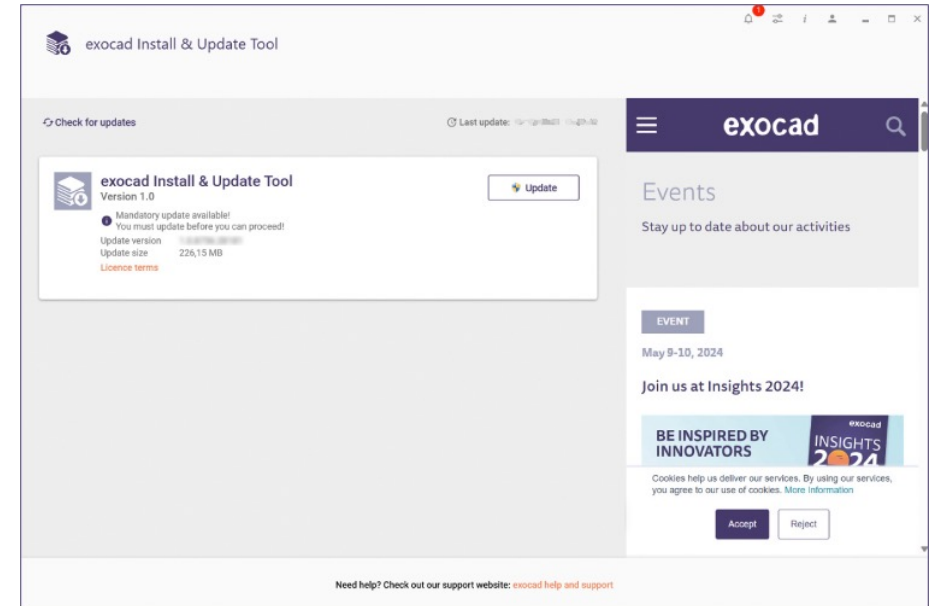
Before you start

1. Read the **“EULA”**.
2. **Scroll down** to activate the **“I agree to the end user license agreement (EULA)”** section and **confirm by clicking the check box** next to it.
3. Then, click **Accept**.



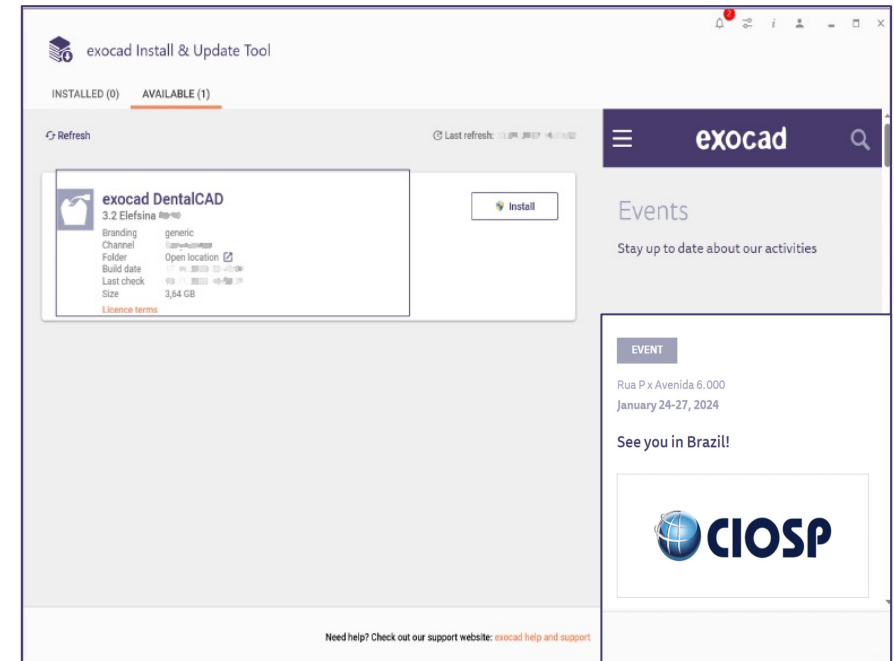
Updating the tool

- Updates may be required before you can use the tool. If so, these are displayed immediately after login.
- Click **Update** to automatically download and install any required updates.
- The tool will automatically relaunch. You must then agree to the **Terms and Conditions** and **Privacy Notice** once again.



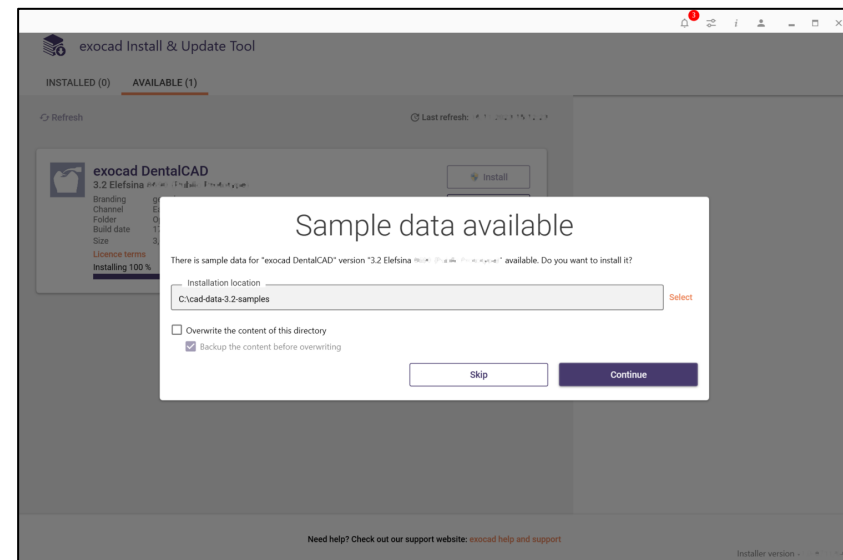
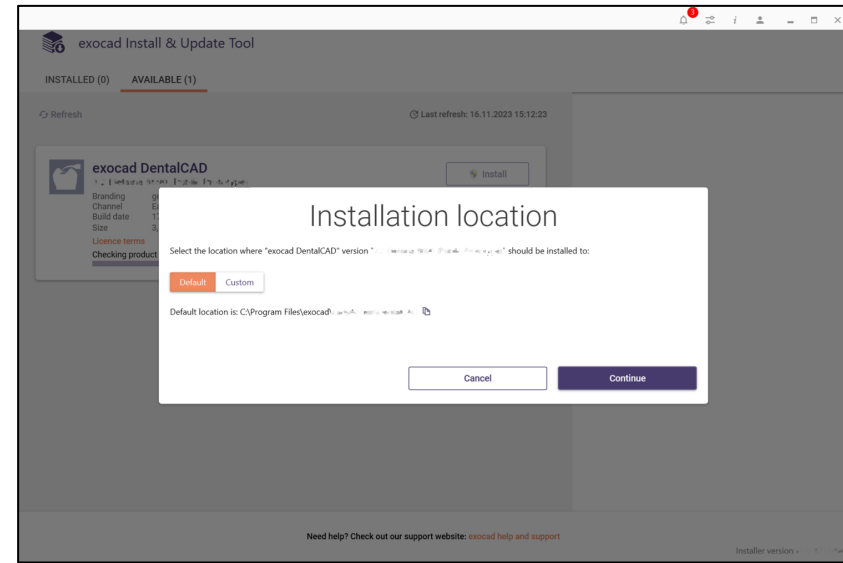
Installing *DentalCAD* via the tool

1. Insert your *DentalCAD* dongle into an available USB port on your PC.
2. In the „available“ tab you will find the available *DentalCAD* versions for you. If "available" is empty there is currently no new *DentalCAD* version available.
3. Click **Install** to automatically download and install *DentalCAD*.



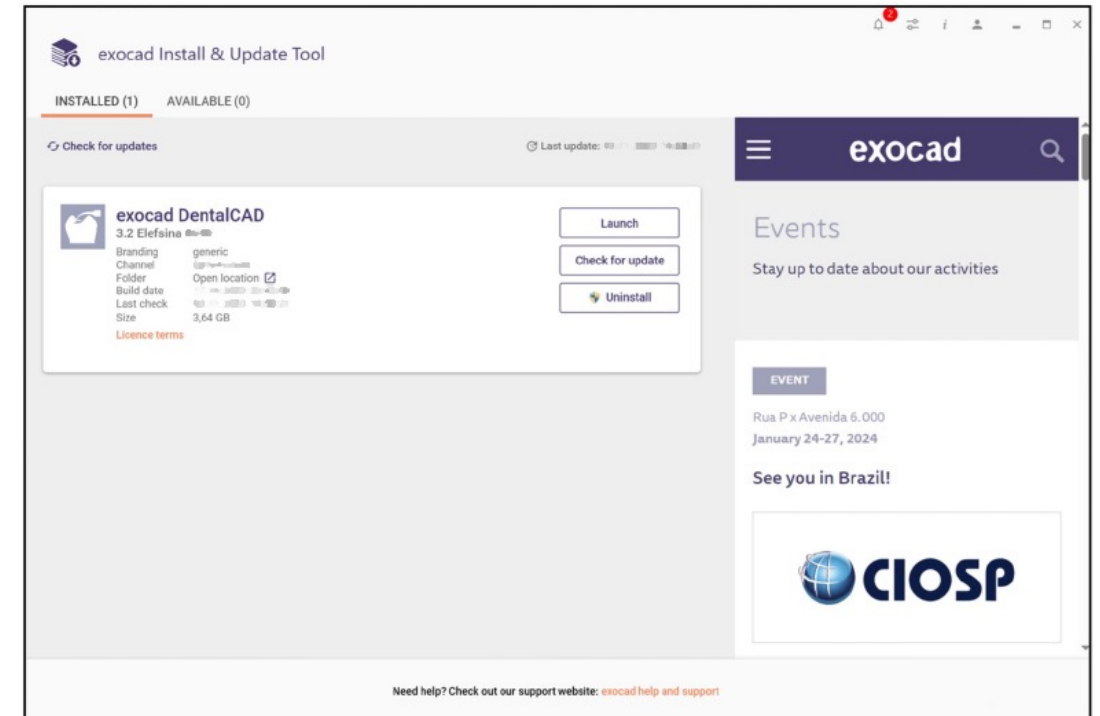
DentalCAD installation options

- Click **Continue** to use the default installation location or **Custom** then **Continue** to define a new path.
- Click **Continue** to also install the sample data or **Skip** if this is not required.



Starting *DentalCAD* via the tool

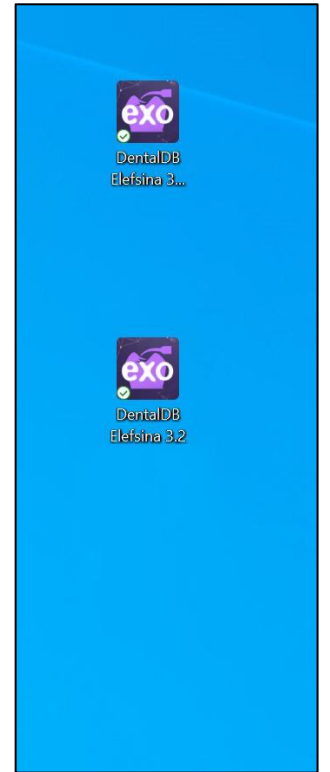
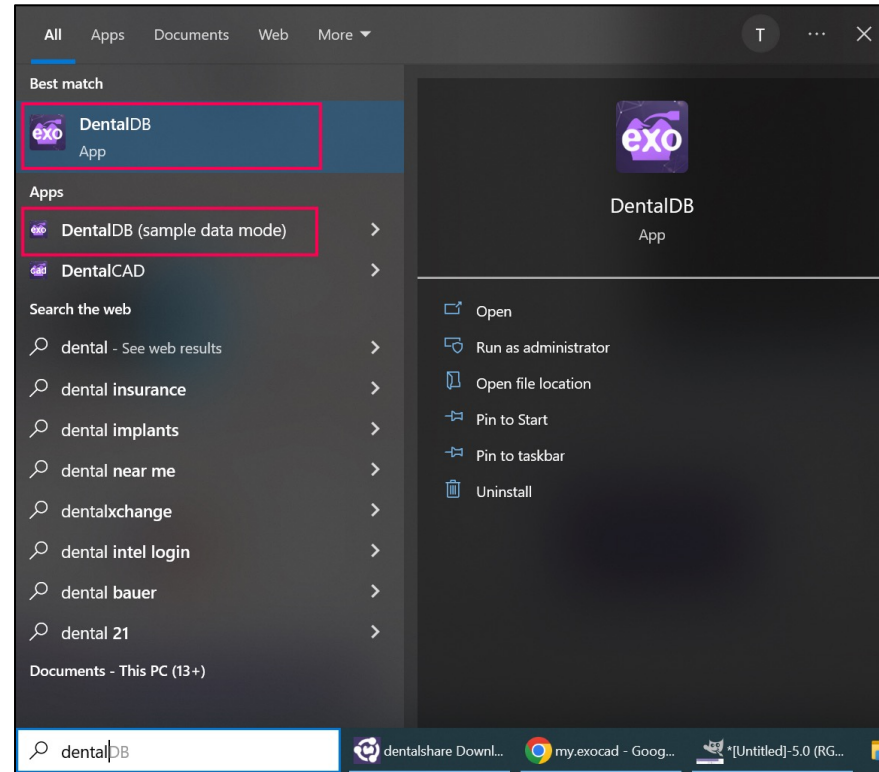
- Installation will take several minutes, depending on your internet connection. After installation, *DentalCAD* is shown as installed within the tool.
- Click **Launch** to start *DentalCAD*.
- Click **Check for update** to manually check for software updates to *DentalCAD*.



Launch newly installed software



- To start *DentalDB*, use the icons on the Windows Start menu and desktop.
- Choose either **DentalDB** to use your own database (regular mode) or **DentalDB (sample data mode)** to use demonstration cases.

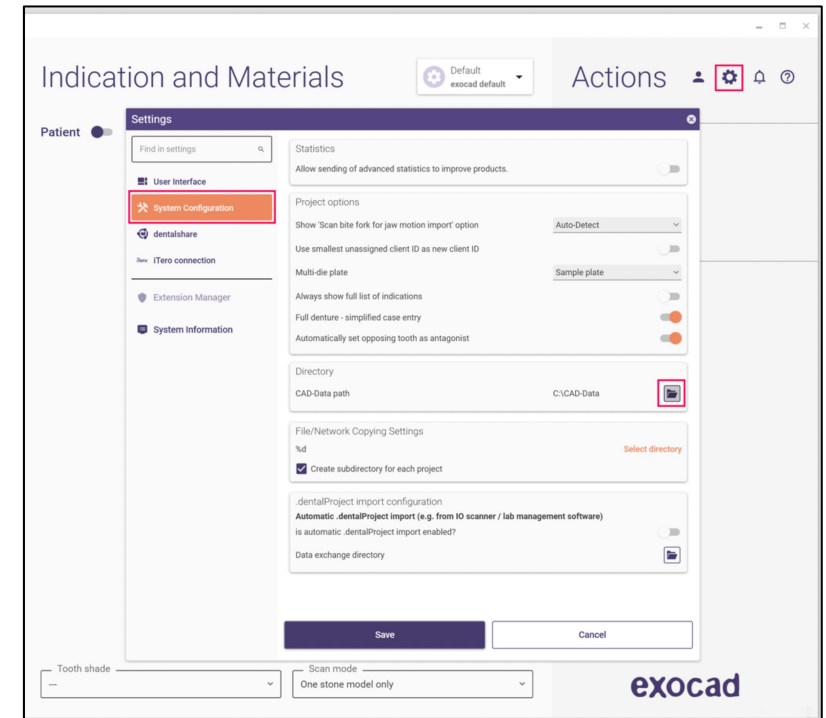
The first time you start the software in regular mode, an empty database is created. Add at least one client (dentist) to proceed.



Using an existing database

To use an existing case/client/patient database from a previous exocad *DentalCAD* software installation:

1. In *DentalDB*, click the **gear icon**  on the top right and then **Settings**.
2. Under **System configuration**, click the **folder icon**  under **Directory**. Locate the existing **CAD-Data** folder on your PC and click **Select folder**.
3. Restart *DentalDB* to use the new database. If the database was previously created with an older *DentalDB* version, it will be updated to support the new version.



exocad

THANK
YOU

exocad.com

